

# ALL TECHNOLOGIES IN ONE

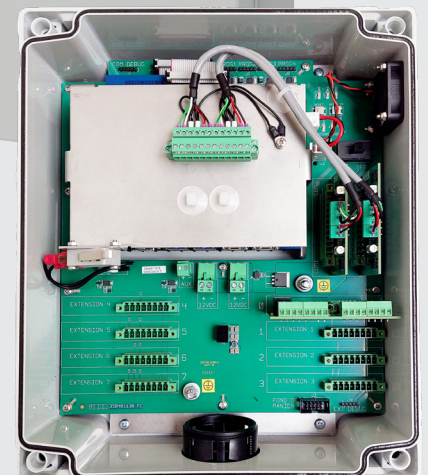


## MAXIBUS-NEO

ALARM INFORMATION HUB  
WITH VIDEO ANALYSIS

### PERFORMANCE FEATURES

- **Centralisation** of all alarm information to a single point, via networking: SORHEA products and third-party products
- New detection technology added: **Video analysis**
- **Secure data transmission** of data: **Cybersecurity**
- **Integration with VMS,** supervisors, hypervisors



## INTEGRATION

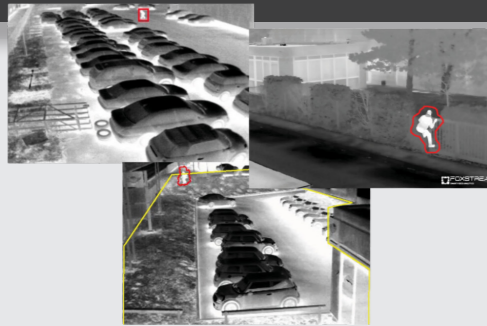
### CENTRALISATION

- Centralisation of all alarm information **in a single point**
- **Four independent communication ports** (each port is compatible with all SORHEA products)
- **Management and remote maintenance** of sensors
- **Optimised detection for each zone** to be protected thanks to a combination of technologies

NEW

### VIDEO ANALYSIS

- **Addition of Video Analysis technology** with artificial intelligence and deep learning algorithms
- **Proven Foxstream technology**
- **Classifying alerts** for specific needs
- **Simultaneous detection and alarm verification**
- **Target type recognition, optimized filtering**



NEW

### VIDEO ANALYSIS

#### ACTIVE INFRARED BARRIERS

- MAXIRIS
- SOLARIS NG
- APIRIS

#### SHOCK DETECTION CABLES

- G-FENCE 2400
- G-FENCE 3000

#### DUAL TECHNOLOGY DETECTORS

- PIRAMID

#### OTHER TECHNOLOGIES WITH MI8

#### ELECTRIC FENCES

#### FENCE PANEL AND OUTRIGGER DETECTORS



ALL TECHNOLOGIES IN ONE



NEW

REINFORCED CYBERSECURITY

OPERATION  
TO VMS

WITH SMART BRIDGE

OPERATION  
TO ALARM CENTERS

PSIM / SUPERVISION

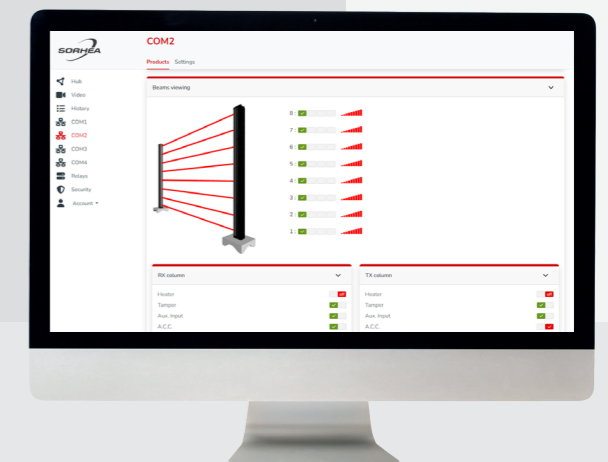
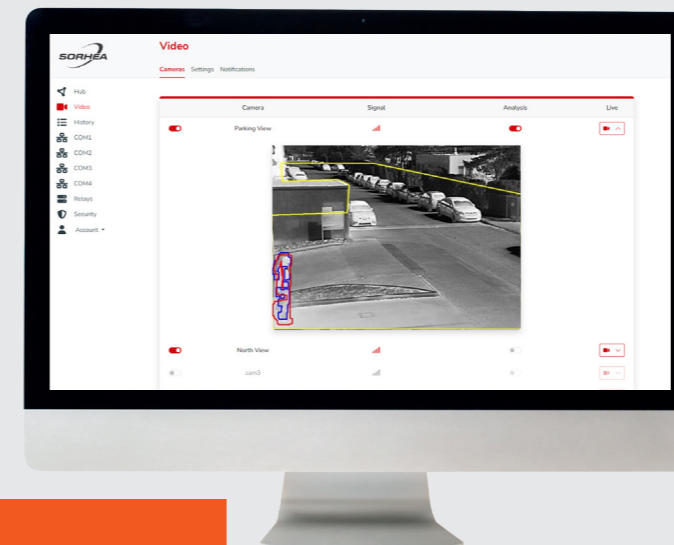
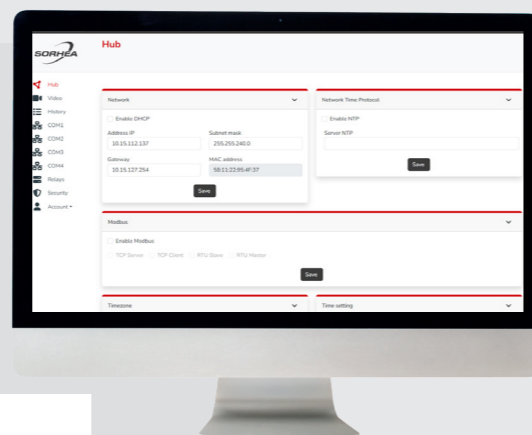
TO DETECT

TO TRANSMIT

TO OPERATE

### CYBERSECURITY SOLUTION

- **Secure transmission of alarms** (cybersecurity)
- **Communication on secure networks protected against external attacks:**
  - Communication possible with the 802.1x networks
  - Capacity to use authentication certificates
- **Encrypted communication on IP network:**
  - HTTPS configuration and operation possible
- **Secure Modbus network communication**
  - Modbus tunnelling by TLS



### OPERATION

- **VMS integration:** Milestone, Genetec RSA, Qognify/Cayuga, Avigilon, ExacqVision
- **Transmission of the event to the Alarm Receiving Center** in real time (integrated «push» mode), for automatic, instant and qualified video qualification
- **Compatibility:** native integration with remote monitoring reception platforms - ESI, AzurSoft, Immix...

## TECHNICAL CHARACTERISTICS

	MAXIBUS-NEO
Power	12 V DC
Number of communication ports	4
Alarm outputs	8 to 136 on/off contacts, Modbus TCP, Modbus RTU, API
Box dimensions (mm)	253mm x 313mm x 115mm
Operating temperature	0 °C to +55 °C

	OPTIONAL EXTRAS
Extension card	Up to 16 additional 8-relay extension cards
MI8: 8-output remote module	Wired or radio system that connects intrusion detectors to the MAXIBUS
Smart Bridge <sup>(1)</sup>	Software interface between the MAXIBUS and VMS, supervisors, PSIM
Electromagnetic compatibility	Compliant with European standards (CE label)

1. One driver per MAXIBUS-NEO whatever the number of communication ports used, one driver per VMS server  
Backwards compatibility possible with MAXIBUS-NEO