

INTEGRATION



SPECTRA

SUPERVISION SOFTWARE OF SORHEA'S PRODUCTS



PERFORMANCE FEATURES

- Advanced **supervisor**
- Optimised **integration platform**
- Robust **cybersecured solution**
- **Customisable solution** available upon request

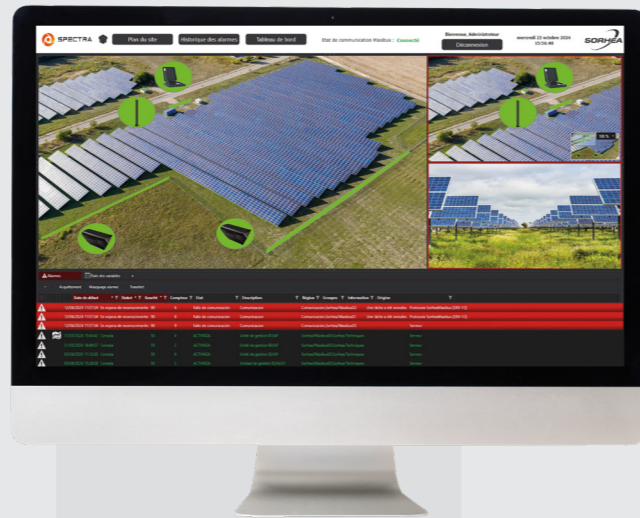


ADVANCED SUPERVISOR

- **Intuitive interface** with a real-time interactive map, zoom on alarms, and alarm zones
- **Installation dashboard** to view event history log and manage alerts efficiently
- **Customised management of rights** thanks to user management and permissions
- **Event logbook** for optimum event tracking (maintenance reports etc.)
- Fast, efficient display of **detailed alarms in the « flow chart »** for continuous monitoring

OPTIMISED INTEGRATION PLATFORM

- **Seamless integration** with flexible driver adaptation
- **Instant data transmission** to VMS and PSIM for centralised supervision

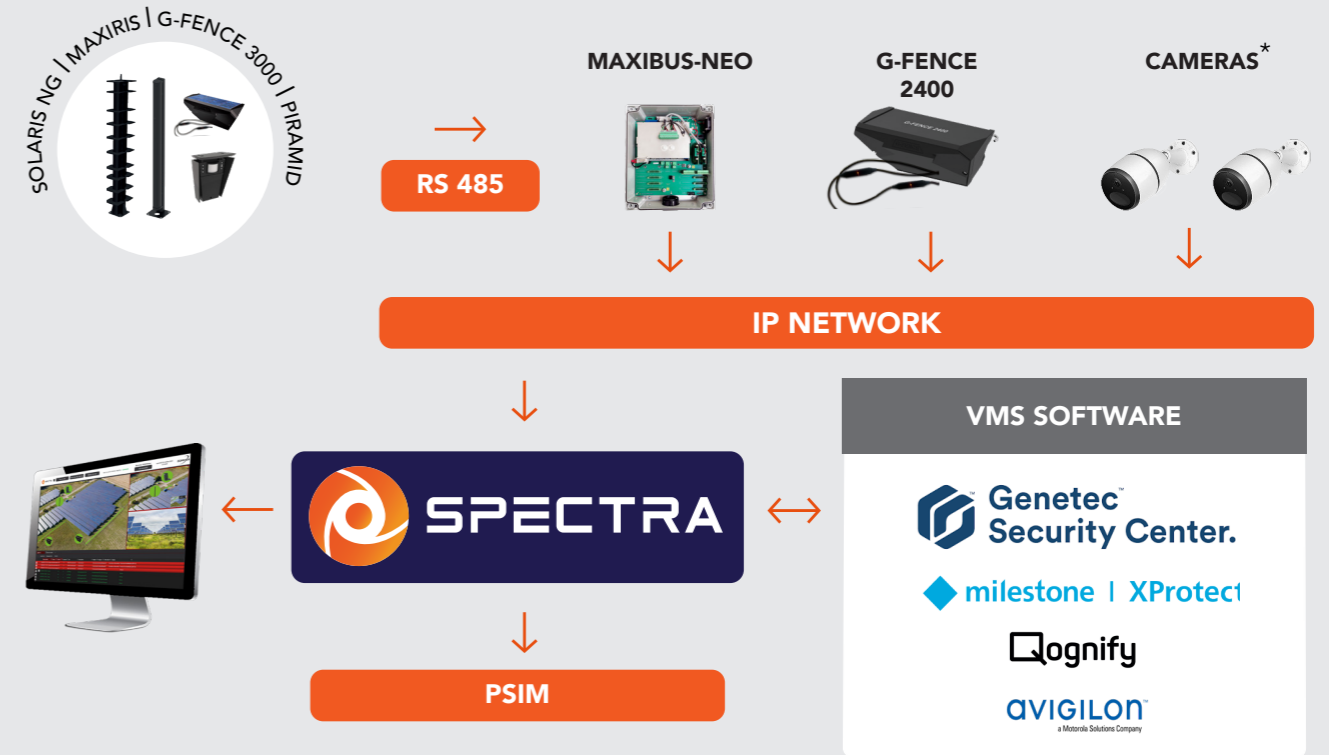


ROBUST & CYBERSECURED SOLUTION

- **Cybersecurity tested** by an independant laboratory: CESTI, ANSSI approved
- **Server redundancy** to ensure service continuity



ARCHITECTURE



* NON-EXHAUSTIVE NUMBER OF CAMERAS AND PRODUCTS

AND MUCH MORE!
OVER 35 INTEGRATED VIDEO SYSTEMS

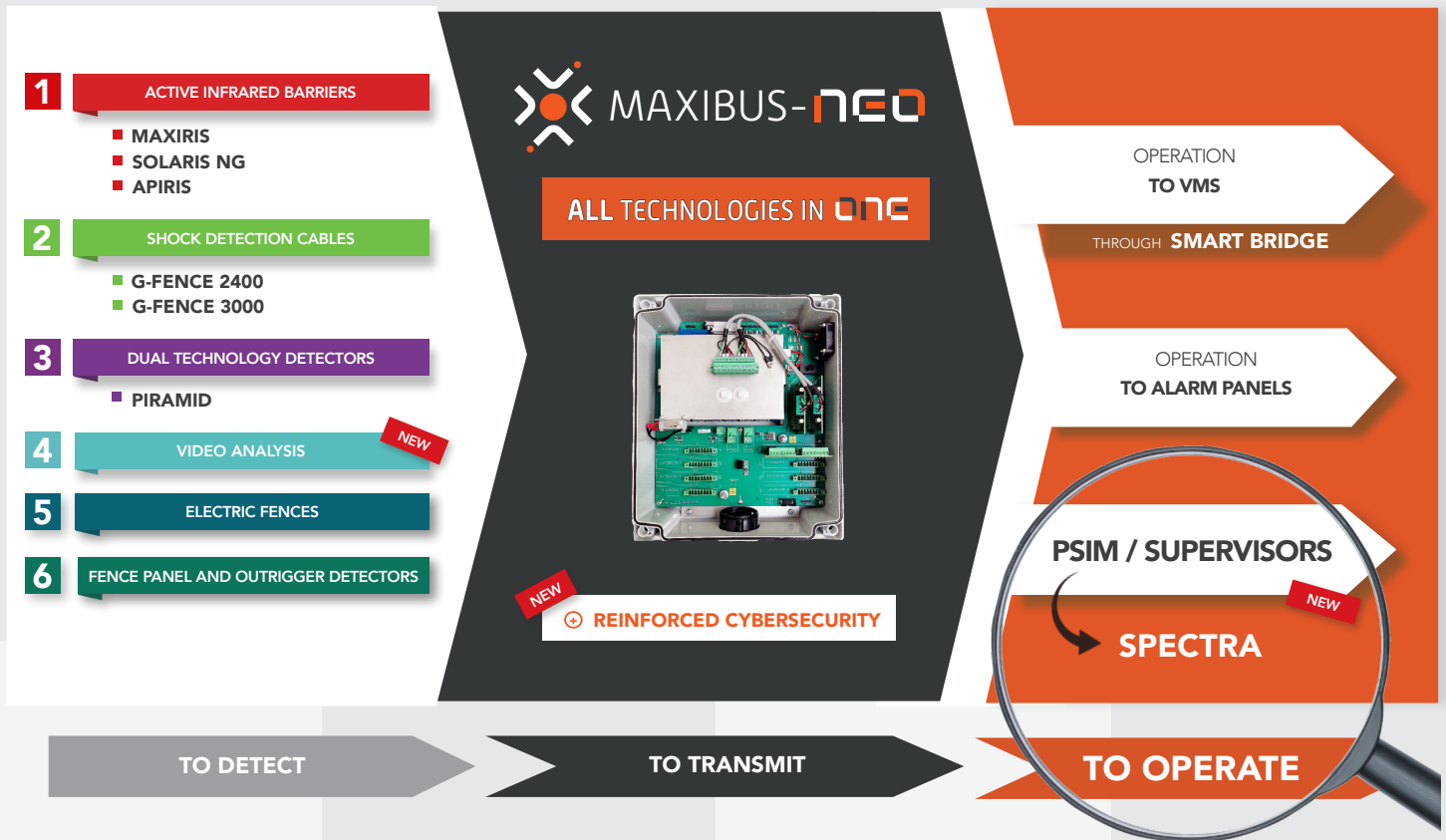
SMART CUSTOMISATION

- **Customisable solution:** Interface personalisation and features available upon request personalisation
- **Smart gateway:** creation of automated scenarios for responses adapted to each situation

HISTORY & MONITORING VIDEO

- **Exhaustive list of all site information in the history**, facilitating research and analysis of past events
- **Application of filters** to optimise event research
- **Live viewing and recorded footage playback of cameras available** for real-time monitoring and post-event analysis
- **Association of cameras with detection zones** for precise and targeted supervision

INTEGRATION



TECHNICAL CHARACTERISTICS

| | SPECTRA | | | | |
|---|---|-----------------------------------|---------------------------------|---------------------------|-------------------------|
| Operating system | Windows 10 or + | | | | |
| Minimum RAM | 16 GB RAM | | | | |
| Minimum storage | Hard disk 100 GB | | | | |
| Available licenses | Server license (sized according to site) | License client station additional | License video module and camera | License redundancy server | License update software |
| MAXIBUS version required | MAXIBUS Universal version 3.5.5 and higher or MAXIBUS-NEO | | | | |
| Integrated products via MAXIBUS | All MAXIBUS Universal and MAXIBUS-NEO compatible products | | | | |
| Products integrated directly into SPECTRA | G-FENCE 2400 | | | | |
| Max. number of MAXIBUS and/or UG G-FENCE 2400 | Non-limitative | | | | |